

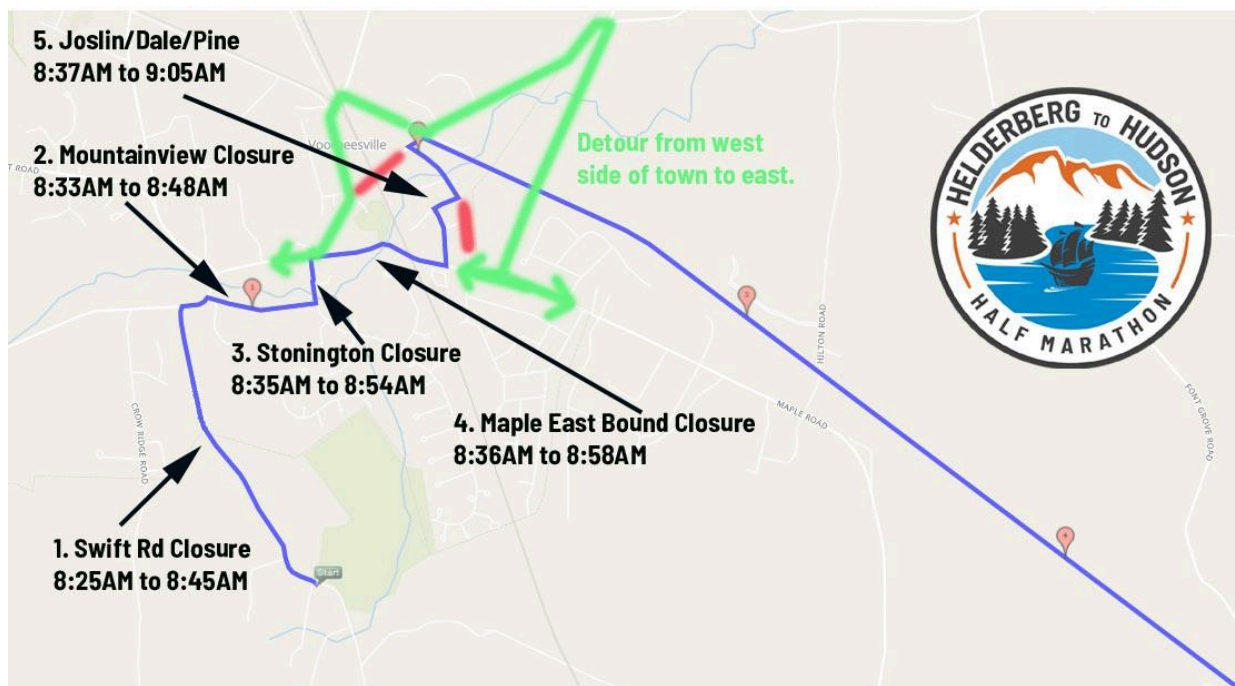
Helderberg to Hudson Half Marathon
c/o ARE Event Productions
PO Box 38195
Albany, NY 12203
518.320.8648
events@areep.com
<http://www.HelderbergToHudsonHalf.com>



Dear Neighbor,

On Saturday, April 13, the 6th Annual Helderberg to Hudson Half Marathon race will be held. The event is a joint effort between Albany-based ARE Event Productions and Albany County. The event showcases the Helderberg-Hudson Rail Trail via a professionally conducted running race.

The race starts at 8:30AM at Wallace Park, with the first 2 miles taking runners through the village of Voorheesville before they enter the rail trail on Voorheesville Ave. Specifically, the course runs north on Swift Rd, right on Mountainview St, left on Stonington Hill Rd, right on Maple Ave, left on Joslin Ave, right on Dale St, left on Pine St, and right onto Voorheesville Ave, where it then enters the rail trail. Unfortunately this will impact traffic between 8:25AM and 9:05AM, as detailed below.



The race begins at 8:30AM from Wallace Park and impacts roads until 9:05AM. Roads will re-open on a rolling basis immediately as the race passes.

The blue line represents the race route. The green line shows the detour to bypass the road closures. The red line indicates portions of streets that the race is not on but are only accessible to local traffic because of the closure.

We sincerely apologize for the inconvenience between 8:25AM and 9:05AM caused by the event. Please rest assured that in the event of an emergency, the race would be halted to allow for the travel of emergency vehicles. In the event that you are home and without plans that morning, we invite you to come cheer for the participants.

Respectfully,

ARE Event Productions